



VOTER GUIDE

2024
GENERAL ELECTION

SCAN THE **QR** CODE TO FIND A LIST OF UBC-ENDORSED CANDIDATES IN YOUR AREA



YOUR GUIDE TO THE NOVEMBER 5, 2024 GENERAL ELECTIONS

OUR ENDORSED CANDIDATES IN LOCAL 541

U.S. PRESIDENT

CA

KAMALA HARRIS
U.S. PRESIDENT



MN

TIM WALZ
U.S. VICE PRESIDENT



U.S. CONGRESS

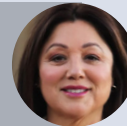
D
4

VAL HOYLE
U.S. CONGRESS



D
5

LORI CHAVEZ-DEREMER
U.S. CONGRESS



D
6

ANDREA SALINAS
U.S. CONGRESS



ATTORNEY GENERAL

OR

DAN RAYFIELD
ATTORNEY GENERAL



OR

TOBIAS READ
SECRETARY OF STATE



STATE SENATE

D
27

ANTHONY BROADMAN
STATE SENATE



D
30

MIKE MCLANE
STATE SENATE



STATE HOUSE OF REPRESENTATIVES

D
5

PAM MARSH
STATE HOUSE REPRESENTATIVE



D
8

LISA FRAGALA
STATE HOUSE REPRESENTATIVE



D
10

DAVID GOMBERG
STATE HOUSE REPRESENTATIVE



D
13

NANCY NATHANSON
STATE HOUSE REPRESENTATIVE



D
14

JULIE FAHEY
STATE HOUSE REPRESENTATIVE



D
16

SARAH FINGER MCDONALD
STATE HOUSE REPRESENTATIVE



D
19

TOM ANDERSEN
STATE HOUSE REPRESENTATIVE



D
20

PAUL EVANS
STATE HOUSE REPRESENTATIVE



D
21

VIRGINIA STAPLETON
STATE HOUSE REPRESENTATIVE



D
22

LESLY MUNOZ
STATE HOUSE REPRESENTATIVE





D 53 **EMERSON LEVY**
STATE HOUSE REPRESENTATIVE 

D 54 **JASON KROPF**
STATE HOUSE REPRESENTATIVE 

D 57 **GREG SMITH**
STATE HOUSE REPRESENTATIVE 

COUNTY & CITY

D 3 **MEGAN PERKINS**
BEND CITY COUNCIL 

D 4 **STEVE PLATT**
BEND CITY COUNCIL 

D 4 **TOBIAS COLVIN**
REDMOND CITY COUNCIL 

A L **CODY BOWEN**
UNION COUNTY SHERIFF 

M **RISA HALLGARTH**
ELGIN MAYOR 

LOCAL BALLOT MEASURES

✓ YES ON MEASURE 9-173
Expanding the Deschutes County Commission from three (3) members to five (5) would encourage greater public deliberation and produce more transparency in important decisions.

✗ NO ON MEASURE 20-362
Although we support the establishment of a Citizens Redistricting Commission for Lane County, the devil is in the details. The mid-cycle requirement to change the Lane County district maps before the 2026 election is highly unusual and costly. The process for putting Measure 20-362 on the ballot ignored public comment, the advice of Lane County elections official, and the Lane Charter Review Committee.

STATE BALLOT MEASURES

✗ NO ON MEASURE 118
Measure would add a costly new 3% tax on sales at every step in the production and selling process – hurting Oregon’s economy and driving up costs for Oregon businesses and consumers at the worst possible time.

SCAN ME



SCAN **QR CODE** TO FIND A LIST OF CARPENTER ENDORSED CANDIDATES IN YOUR AREA

ESCANEEAME



ESCANEE EL **CÓDIGO QR** PARA ENCONTRAR UNA LISTA DE CANDIDATOS RECOMENDADOS EN SU ÁREA